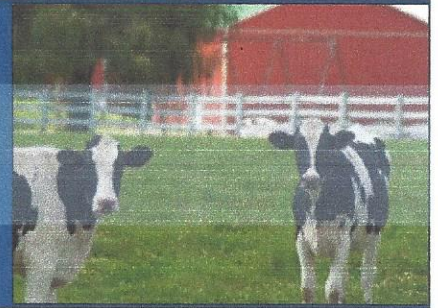


# **MARTELLA**

**Livestock Market, Inc.**



**P.O Box 907 – Tipton, CA 93272 – 16140 Hwy 99  
Office: (559) 752-1000 – Fax: (559) 752-4540**

**July 30<sup>th</sup>, 2018 – August 3<sup>rd</sup>, 2018**

**Top Hol Springers - \$1300 - \$1500**

**Med Hol Springers - \$1100 - \$1300**

**Top Hol Beef Cows - \$.60-\$.65**

**Good Hol Beef Cows - \$.55 - \$.60**

**Med Hol Beef Cows - \$.50 - \$.55**

**Top Beef Bulls - \$.80 - \$.85**

**Good Beef Bulls - \$.75 - \$.80**

**Med Beef Bulls - \$.70 - \$.75**

**Top Milk & Dry Cows \$1200-\$1400**

**Med Milk & Dry Cows \$1000-\$1200**